



DEDICATED ACCESSORIES FOR PAX TERMINALS

Get the most out of
your **payment terminals.**



Carrying cases - work smarter & faster.

Our textile carry cases not only protect your devices, but also make your daily work easier. Thanks to a variety of configuration options, we can offer a solution well suited to the requirements of each business.



A new way to use your POS terminal

Accept cashless payments and keep your hands free the rest of the time. Use our wearable cases to work more efficiently and comfortably.



Perfect fit

We do not manufacture universal cases. We provide a unique case for each device model. This guarantees a perfect fit for your Pax terminals.



Easy access to key features

Our cases provide easy access to key device functions. This means that you don't have to remove the case to use the most important buttons, card slots or connections.



Durable and reliable

We use precise sewing technology that guarantees a high quality finish. Our cases are made of carefully selected materials that look great and fit well in your hand.



Configuration options

Find the best solution for your business thanks to the different types of mounts available in our cases. You can also choose the material depending on your stylistic and functional preferences.

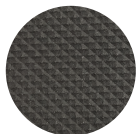


We specialize in custom-made projects!

As a flexible B2B partner, we can offer new, unique solutions designed especially for your company.

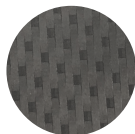
Three material options

The OEM Protector textile cases are available in three material options. Depending on the type of device and the working environment, we will propose the best solution.



Diamond

Very strong hybrid material made of polyamide and polyurethane. Its texture resembles the rubber, making it easy to carry in hand.



Titan

Hybrid material made of polyamide and polyurethane. Very durable and resistant to dirt and dust.



Leather

Designed to last in difficult conditions. It does not fray at the edges and has a high tear strength. Plus, it looks elegant.



High-quality textiles

Our textiles come from high-class European producers. We choose only proven materials and we never compromise on quality.

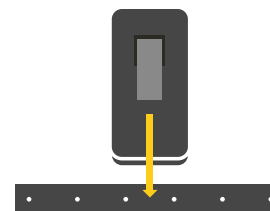
Use with shoulder or neck straps

Each case can be optionally equipped with **metal D-Rings** - small rings that allow the device to be mounted on a strap. This is another huge upgrade for your daily work quality.



Choose a mount and additional accessories

Our cases can be equipped with optional mounting accessories. Thanks to them, carrying the device is even easier!



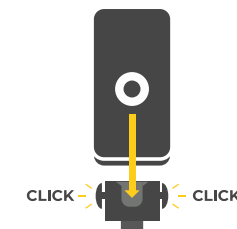
Belt clip

Clip mounting is the basic way of attaching device to any belt or pocket. Simple and quick solution.



Swivel Mount

Swivel mount lets you quickly attach and detach the device. Just rotate it 90 degrees to lock/unlock. This mount can be used with belt adapters or arm mounts (sold separately).



360 Mount

The integrated 360-mount mount allows the device to be attached and rotated freely. It is delivered with a special adapter attached to a belt or pocket.



Wrist mount with swivel mount ▶

This accessory is extremely practical for smaller terminals like PAX A77. It allows you to quickly mount the POS terminal on your arm, while leaving your hands free.



We have designed carrying cases for:

A77	
A920	
A920 PRO	
D220	
Q92	
S920	



Are you looking for a case for any other Pax terminal?

We are constantly expanding our range of accessories. We are happy to design new cases for other Pax terminals.

Easy carrying with textile holsters.

Have your POS terminal always at hand. Our holsters make it easy to carry almost any mobile terminal. Save time, work smarter and protect your equipment at the same time.

Easy carrying

Keep your hands free when you are not using the terminal. Just slip it into the holster and it'll be there when you need it.

Durable and reliable

Thanks to high-quality materials and advanced production technology, our holsters guarantee durability without compromise.

Device protection

Holsters help to protect your devices from bumps and scratches. Forget about accidentally dropping or losing your device.



Save time and work smoother

Holsters are perfect solution for places with high work dynamics - restaurants, bars, fairs, airplanes or trains.

Easy belt attachment

Our pouch holsters can be easily attached to any trouser belt thanks to the textile loop on the top. Your payment terminal will always be at hand, and thanks to the open design, you can quickly put the device in or out.

Universal belt loop

The large belt loop is compatible with most trouser belts. However, for this product we recommend our **buckle hip belt** (sold separately) that you can put on even faster.



Made of original Cordura

Our pouch-type holster is made of original Cordura. The structure of Cordura fibers is characterized by above-average abrasion resistance. This fabric is resistant to weather conditions, and it's extremely light at the same time.

Holsters for Pax terminals

	POCKET HOLSTER (SIZE S) OEM_HOL_6030	POUCH HOLSTER (SIZE S) OEM_HOL_6153	POUCH HOLSTER (SIZE M) OEM_HOL_6107
PAX			
A50	X	X	
A77	X	X	
A910			X
A920			X
A920 PRO			X
A930			X
D220			X
D230			X
M30	X	X	
M50	X	X	

Made in Europe, Poland

Most of our products are manufactured locally - in northern Poland. Being so close to our factories, we can constantly monitor product quality, reduce shipping times and develop new products faster.



Keypad protectors - safe **device disinfection.**

The use of disinfectants is good for the health of employees and customers, but can be destructive to electronic devices such as POS terminals. We came up with a simple and effective solution: protective films for pin-pad buttons.

Perfect fit

We provide a custom-made keyboard films for each terminal model. You don't have to cut anything by yourself - the pin-pad cover is ready to use.

Wide temperature range

Our keypad film is fully functional in any temperature from -48°C to $+88^{\circ}\text{C}$ (-54.4°F to 190.4°F). That guarantees a good protection even in the extreme conditions.

Easy removal

The film is made of an elastic material with non-marking glue. You can easily remove it when needed without leaving any long-lasting marks.



Screen protection - **no more scratches** and cracks.

Our advanced screen films are designed to protect each device from scratches and other common damage. OEMprotector offers a wide range of screen protector types.

Easy to apply

You don't need any special tools or glue. Just remove the backing layer and place the foil directly on the screen. Then remove the front layer. And that's all!

Perfect fit

We provide perfectly matched, laser-cut screen protectors for each device. You don't have to cut anything by yourself!

11 types

Our protective films are available in 11 types with different properties. We will help you choose the best solution for your company.



Special screen protectors - much more than a protection.

In addition to screen films with different levels of protection, we also offer films with special functions - e.g. antibacterial or privatization films.

OEM Protector Screen Protectors Types

Basic protection

PRIME ★★★★★ ★★★★★

Standard protective film. Recommended for all the devices that require basic protection.

Strong protection

HYBRID ★★★★★ ★★★★★

Next generation hybrid PET GLASS which offers amazing protection against scratches thanks to its super thin layer similar to the true glass.

Antibacterial

HYBRID BF ★★★★★ ★★★★★

Hybrid BF is a truly elastic and ultra thin, flexible PET GLASS. New generation zinc oxide coating helps reduce nearly 99% of bacteria on the screen.

Matt

MATT ★★★★★ ★★★★★

Protective film with a special matt layer which reduces glare and fingerprints.

Privatization

PRIVATE ★★★★★ ★★★★★

Protective film equipped with a special privacy layer which hides the display from any bystanders. Works only in one horizontal or vertical layer. Reduces glare and smudges.

For curved screens

FLEXI+ ★★★★★ ★★★★★

Protective film with a special glue dedicated for curved displays. Offers edge-to-edge full protection and self-healing layer.

PRIME+ ★★★★★ ★★★★★

Standard protective film offering additional oleophobic layer which not only protects the screen of the device but also helps to keep it clean.

HARD ★★★★★ ★★★★★

Hardened protective film offering extra protection against scratches and damages.

IMPACT ★★★★★ ★★★★★

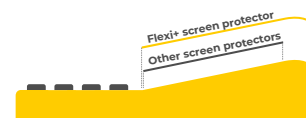
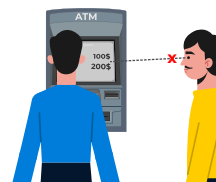
Super tough, elastic film with supreme impact protection, shock absorption and clarity. Smooth touch makes it easy to operate the touchscreen.

NOBACTERIA ★★★★★ ★★★★★

OEMnobacteria is a durable protective film with special new generation zinc oxide coating which helps reduce nearly 99% of bacteria that accumulate on the screen.

MATT PRO ★★★★★ ★★★★★

Matt protective film. Offers full protection and reduction of reflections and fingerprints.



Take a look at your device from the side. If the screen (or its frame) is curved, you may consider choosing the Flexi + screen protector to protect the entire surface. **You can still choose the rest of our screen protectors, but only to secure the flat part of the screen.**

Specification and comparison

[illegible]

Screen protectors for Pax terminals:

Device	Available screen protector types
A50	Prime / Prime+ / Matt / Mattpro / Private / Hard / Hybrid / Hybrid BF / Nobacteria / Impact / Flexi+
A77	Prime / Prime+ / Matt / Mattpro / Private / Hard / Hybrid / Hybrid BF / Nobacteria / Impact / Flexi+
A910	Prime / Prime+ / Matt / Mattpro / Private / Hard / Hybrid / Hybrid BF / Nobacteria / Impact / Flexi+
A920	Prime / Prime+ / Matt / Mattpro / Private / Hard / Hybrid / Hybrid BF / Nobacteria / Impact / Flexi+
A920 PRO	Prime / Prime+ / Matt / Mattpro / Private / Hard / Hybrid / Hybrid BF / Nobacteria / Impact / Flexi+
A930	Prime / Prime+ / Matt / Mattpro / Private / Hard / Hybrid / Hybrid BF / Nobacteria / Impact / Flexi+
D180	Prime / Prime+ / Matt / Mattpro / Private / Hard / Hybrid / Hybrid BF / Nobacteria / Impact / Flexi+
D200C	Prime / Prime+ / Matt / Mattpro / Private / Hard / Hybrid / Hybrid BF / Nobacteria / Impact / Flexi+
D220	Prime / Prime+ / Matt / Mattpro / Private / Hard / Hybrid / Hybrid BF / Nobacteria / Impact / Flexi+
E500	Prime / Prime+ / Matt / Mattpro / Private / Hard / Hybrid / Hybrid BF / Nobacteria / Impact / Flexi+
E800	Prime / Prime+ / Matt / Mattpro / Private / Hard / Hybrid / Hybrid BF / Nobacteria / Impact / Flexi+
Q20	Prime / Prime+ / Matt / Mattpro / Private / Hard / Hybrid / Hybrid BF / Nobacteria / Impact / Flexi+
Q30	Prime / Prime+ / Matt / Mattpro / Private / Hard / Hybrid / Hybrid BF / Nobacteria / Impact / Flexi+
Q80	Prime / Prime+ / Matt / Mattpro / Private / Hard / Hybrid / Hybrid BF / Nobacteria / Impact / Flexi+
Q90	Prime / Prime+ / Matt / Mattpro / Private / Hard / Hybrid / Hybrid BF / Nobacteria / Impact / Flexi+
Qr55	Prime / Prime+ / Matt / Mattpro / Private / Hard / Hybrid / Hybrid BF / Nobacteria / Impact / Flexi+
S300	Prime / Prime+ / Matt / Mattpro / Private / Hard / Hybrid / Hybrid BF / Nobacteria / Impact / Flexi+
S900	Prime / Prime+ / Matt / Mattpro / Private / Hard / Hybrid / Hybrid BF / Nobacteria / Impact / Flexi+
S920	Prime / Prime+ / Matt / Mattpro / Private / Hard / Hybrid / Hybrid BF / Nobacteria / Impact / Flexi+
SP20	Prime / Prime+ / Matt / Mattpro / Private / Hard / Hybrid / Hybrid BF / Nobacteria / Impact / Flexi+

Comfort upgrade with terminal stands.

Our stands for Pax payment terminals provide convenient access to cashless payments in shops and service points. They are available in various functional and stylistic options, thanks to which we can perfectly match the offer to any business.

Various rotation options

You can choose one of the two rotation method (swivel or swivel & tilt) or the basic solution which is a static stand.



Powder paint coating

Our metal stands are covered with powder paint coating applied electrostatically. This guarantees perfect coating and its durability.

Easy cable management

Hide the terminal's cables directly in the stand. No more cable-mess around the device at your sales area.



Design

Depending on your preferences, our metal stands can be equipped with **Flat Type** or **Pole Type** leg. ▶



Flat type



Pole type



Elastic rubber rosette

◀ **Elastic rosette** at the base of the pole is used to cover the screws. Thanks to the satin finish, it also adds an elegant look.

The stands will perfectly match your brand thanks to the possibility of choosing **any color from the RAL palette**. ▶



Available in any RAL color



Multi POS Mounting Solution

Are you looking for a comprehensive solution? We offer POS Mounting Solution, which organizes the whole payment zone, ensuring convenience for both: customers and employees.

It provides an easy mount for multiple devices:

- **POS monitor**
- **Payment terminal**
- **Barcode scanner**
- **Fiscal printer**
- **Keyboard**



◀ Additionally, this product helps you manage your cables, improving aesthetics and functionality. No more clutter around the cash register!



Rubber cases for **ultimate protection.**

Stop worrying about cracks, scratches and greasy stains on your payment terminals. Our rubber cases are designed to protect your devices and save your money.

● Perfect fit

We manufacture unique rubber cases for each device, giving you a perfectly fitted protection. Stop using an universal solutions, that never works fine.

● Easy access to device functions

Our rubber cases feature laser cutted holes that let you easily charge most of the terminals or use its inputs and buttons.

● Configuration options

Depending on device type, we can offer different color and finish options. Match your protective cases to your brand's color palette or simply to your own preferences.



Contact us and let's help your company



OEM Protector

Unito Sp. z o.o. Sp. k.
Plac Kaszubski 17
81-350 Gdynia, Poland
VAT NUMBER: PI5862296099

Phone

+48 881 050 755

Email

info@oemprotector.com

Website

oemprotector.com

